

TRIANGLE homeimprovement

FEBRUARY 2013

WWW.TRIANGLEHOMEIMPROVEMENT.COM

Smart home improvement starts here.

See our added living space, same footprint Makeover of the Month p.18

Green Home Guide

Ways to improve your environmental friendliness through remodeling, redecorating or simply maintaining your home p.8

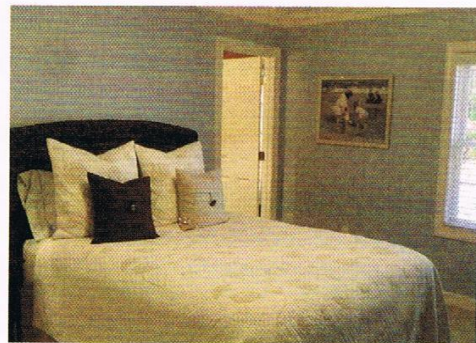
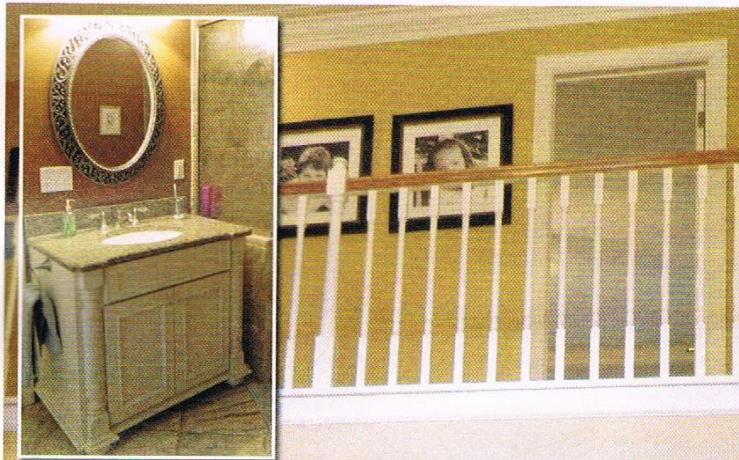
Eco-Friendly Remodels

Three Triangle-area home makeovers that benefit the environment and add value p.13

Same Footprint, Added Living Space

Renovation by Asbury Remodeling & Construction, 1002 Towhee Drive, Apex, NC, 27502, (919) 904-4548, www.asburyremodeling.com

BY TAYLOR ARNOLD



When the owners of this Preston Village home needed to add a guest bedroom and bath to accommodate out-of-town visitors, they looked at renovating their existing footprint instead of putting on an addition. "The goal was to create more livable square footage without the expense of an addition," explains Myriam Harvey of Asbury Remodeling & Construction. "Converting the vaulted living room into a standard-size 9-foot ceiling with a bedroom and bathroom above not only accomplished the goal of creating more livable space, but also achieved better energy-efficiency with heating and cooling."

The home also had two unfinished rooms on the second floor that the family converted into a theater room and wet bar. "The wet bar had a coliseum-style column to mask the support for a load bearing wall," Harvey says. "The theater room was wired for theater-style surround sound, had built-in cabinetry for components and had access doors for storage."

The new guest bedroom now boasts two closets, a double closet for owner storage, and a single closet dedicated to guests. The full bath allows for privacy and also has a secondary door for additional bedroom access. And the Asbury team was able to keep the original two-story foyer, giving the home a dramatic sense upon entering.

The 2-week renovation added an extra 288 square feet to the home, reduced heating and cooling costs, and eliminated noise from the two-story area—a great way to accommodate the homeowners' needs and add value to their home. 🏠



Photos courtesy of Asbury Remodeling & Construction

For more information and resources about this project, go to www.trianglehomeimprovement.com